



60 WBL 11

# FLASHING WARNING BEACON

## FOR USE IN INDUSTRIAL ENVIRONMENTS

The flashing warning beacon is used to visually indicate alarm signals as well as incoming calls at intercom stations. It can directly be controlled by the INDUSTRONIC system or an intercom station.

The robust beacon can be installed both indoors and outdoors.



- Weather-proof flashing warning beacon for industrial environments
- Degree of protection IP65
- Sturdy ABS housing
- Impact-proof lens
- Universal application possibilities

### MECHANICAL DATA

Housing material	ABS
Lens material	Polycarbonate (PC)
Width x height x depth	120 mm x 144 mm x 85 mm (4.72" x 5.67" x 3.35")
Cable gland	M20
Weight	Approx. 0.3 kg (approx. 0.66 lbs)
Lens colors	Red, Orange, Yellow, White (other colors upon request)

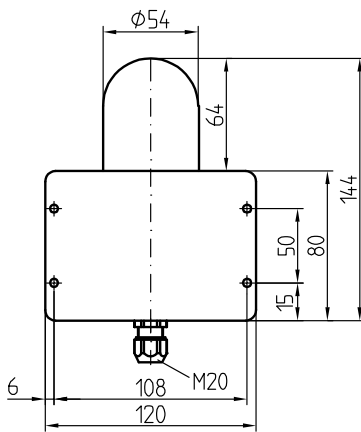
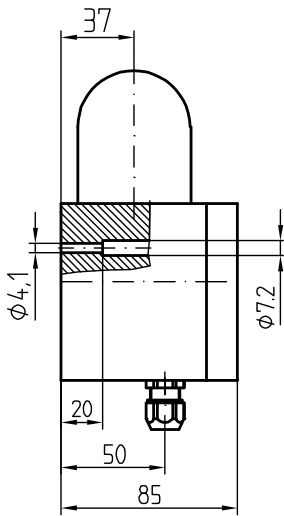
### ELECTRICAL DATA

Operating voltage range	50 V DC to 72 V DC
Current consumption	125 mA
Flash energy	5 Joule
Flash rate	1 Hz

### ENVIRONMENTAL REQUIREMENTS AND STANDARDS

Ambient temperature during operation	-40 °C to +55 °C (-40 °F to +131 °F)
Degree of protection	IP65

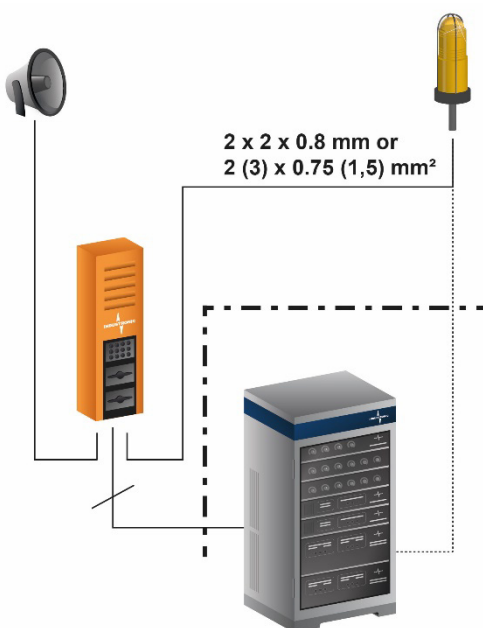
## DIMENSIONS



## TYPE OVERVIEW

Lens color	Type	Type number
Red	60 WBL 11/RD	070-000-021/RD
Orange	60 WBL 11/OG	070-000-021/OG
Yellow	60 WBL 11/YE	070-000-021/YE
White	60 WBL 11/WH	070-000-021/WH

## APPLICATION



### Call Signaling at Intercom Stations

The flashing warning beacon starts to flash, as soon as the intercom station receives a call. The signaling stops, as soon as the incoming call has been accepted or the pre-programmed time has elapsed.

### Alarm Signaling

The flashing warning beacon is activated for the duration of the alarm. It can either be connected directly to the system or an intercom station in order to control the beacon from there.

© INDUSTRIONIC